

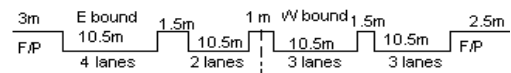
YEAR 2014

COVERAGE (B) STATION 4216

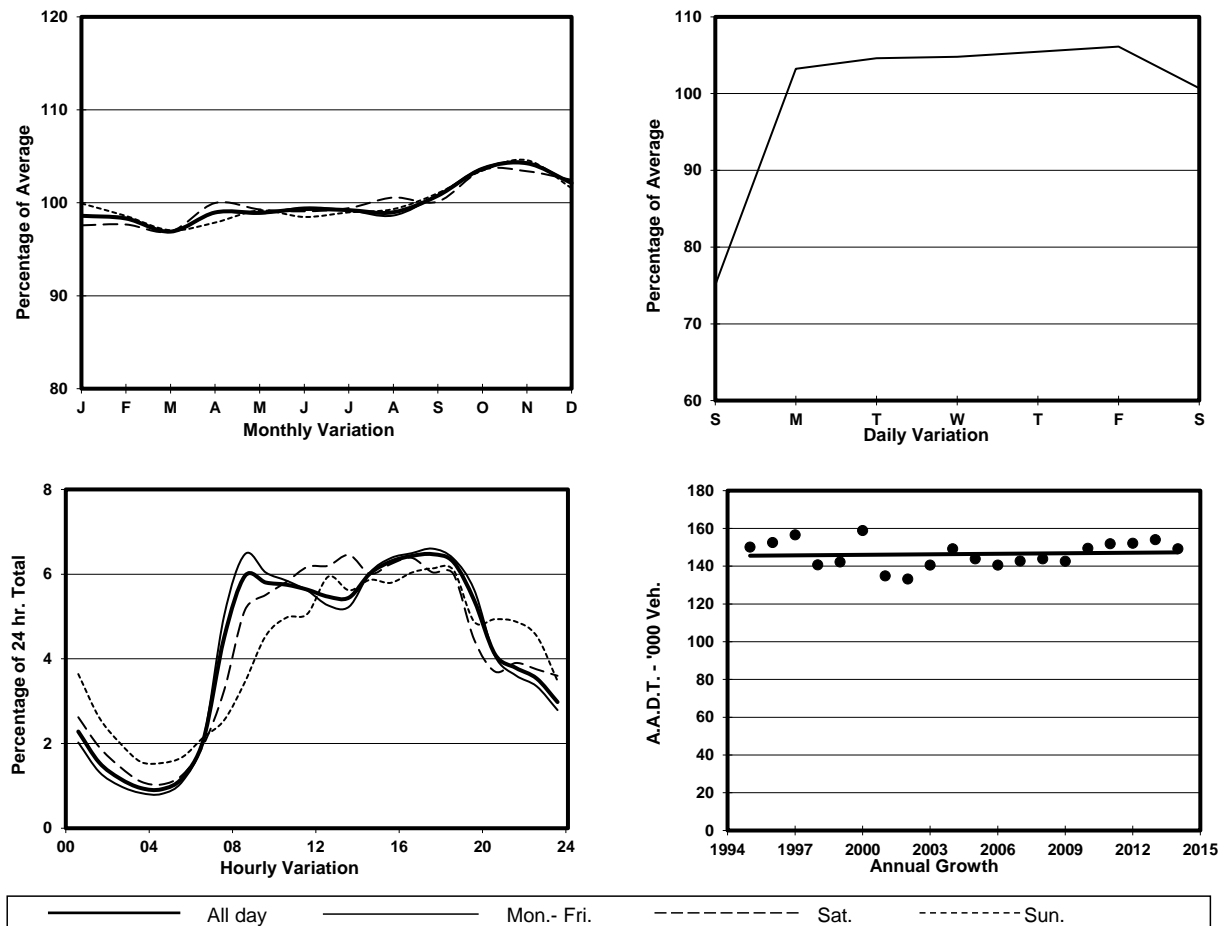
ROAD NETWORK MAJOR

ROAD TYPE URBAN TRUNK ROAD

LINK KWUN TONG RD (from PING SHEK EST EASTERN END to WAI YIP ST FO <K42>)



1. TRAFFIC FLOW VARIATION AND GROWTH



2. TRAFFIC CHARACTERISTICS (BY DIRECTION)

Parameter	All - Day	Mon. - Fri.	Sat.	Sun.
EAST BOUND				
A.A.D.T.	73610	78340	74830	55740
R 12 / 24 - %	70.5	71.9	70	61.7
R 16 / 24 - %	86.5	87.8	84.5	80.2
AM Peak Hour	0800-0900	0800-0900	0900-1000	0900-1000
One-way flow at AM peak hour	4780	5530	4390	2660
T - % (AM)	-	12.2	-	-
PM Peak Hour	1600-1700	1700-1800	1600-1700	1700-1800
One-way flow at PM peak hour	4600	4950	4830	3520
T - % (PM)	-	12.8	-	-
Prop.of commercial vehicles - 16 hr.	-	12.3	-	-
WEST BOUND				
A.A.D.T.	75560	80200	77500	57680
R 12 / 24 - %	69.6	70.8	68.5	62.5
R 16 / 24 - %	87.3	88.3	85.6	82.4
AM Peak Hour	0900-1000	0900-1000	0900-1000	0900-1000
One-way flow at AM peak hour	4290	4790	4010	2490
T - % (AM)	-	13.2	-	-
PM Peak Hour	1700-1800	1800-1900	1700-1800	1800-1900
One-way flow at PM peak hour	5100	5530	5120	3460
T - % (PM)	-	11.3	-	-
Prop.of commercial vehicles - 16 hr.	-	12.1	-	-

3. OTHER INFORMATION AND COMMENT

Coverage (B) Station 4216
Year 2014

4. Vehicle classification and occupancy - Monday to Friday

Time		Class of vehicle									
		Motor	Private	Taxi	Private	PLB	Goods veh.		Non	Fr. Bus	
		Cycle	Car		LB		Light	M & H	Fr. Bus	SD	DD
0700-0800	Pro	5.9	27.2	20.3	3.7	6.5	18.4	6.0	4.9	0.1	6.9
	Ocp	1.1	1.4	2.1	5.2	10.9	1.4	1.2	20.8	25.4	47.2
0800-0900	Pro	3.5	41.9	20.1	1.4	6.2	14.5	4.0	2.5	0.1	5.9
	Ocp	1.1	1.3	2.2	8.5	14.7	1.5	1.4	28.7	28.7	59.0
0900-1000	Pro	2.5	31.7	22.0	0.8	4.6	25.7	5.5	1.7	0.1	5.3
	Ocp	1.1	1.3	1.9	2.7	10.2	1.5	1.4	17.2	23.6	30.9
1000-1100	Pro	2.7	27.7	21.3	0.8	3.6	30.5	7.2	1.0	0.1	5.1
	Ocp	1.1	1.4	1.9	1.8	8.0	1.4	1.3	11.2	15.8	23.7
1100-1200	Pro	2.3	30.9	15.0	1.0	4.3	33.0	7.7	1.4	0.1	4.3
	Ocp	1.1	1.3	1.9	2.2	8.8	1.4	1.8	7.9	16.3	23.1
1200-1300	Pro	2.5	33.9	18.9	1.8	4.4	25.6	6.6	1.7	0.1	4.6
	Ocp	1.0	1.4	1.9	3.9	7.4	1.5	1.5	15.0	23.2	24.0
1300-1400	Pro	2.8	30.8	16.7	0.9	3.5	31.9	7.4	1.3	0.1	4.7
	Ocp	1.1	1.5	2.3	2.1	9.0	1.5	1.4	12.4	25.0	24.3
1400-1500	Pro	2.2	32.5	16.9	0.7	3.2	32.7	6.6	1.4	0.1	3.8
	Ocp	1.1	1.5	2.1	1.4	9.5	1.5	1.5	15.5	25.6	24.5
1500-1600	Pro	3.3	32.1	18.3	1.9	3.6	28.1	7.4	1.5	0.1	3.8
	Ocp	1.0	1.5	1.9	5.2	10.3	1.5	1.4	16.2	14.6	28.2
1600-1700	Pro	3.3	29.5	19.7	1.8	3.2	29.6	5.6	2.6	0.1	4.6
	Ocp	1.1	1.5	1.8	4.8	12.5	1.5	1.2	12.8	19.0	31.8
1700-1800 Peak hour	Pro	2.9	38.3	17.6	1.6	4.1	23.3	4.4	2.1	0.1	5.6
	Ocp	1.1	1.4	2.0	2.1	12.6	1.5	1.3	12.3	20.8	40.8
1800-1900	Pro	6.3	44.7	16.4	0.8	5.7	15.5	3.0	1.7	0.1	5.7
	Ocp	1.1	1.5	2.1	2.4	14.5	1.5	1.4	22.3	25.4	61.4
1900-2000	Pro	3.5	49.6	22.0	0.3	5.3	9.9	2.4	1.7	0.1	5.2
	Ocp	1.1	1.4	2.2	1.4	14.0	1.5	1.2	16.0	17.9	46.1
2000-2100	Pro	3.8	46.4	25.1	0.1	6.3	8.8	2.3	1.9	0.1	5.2
	Ocp	1.1	1.4	2.0	4.5	10.6	1.4	1.3	21.5	16.3	31.9
2100-2200	Pro	3.8	44.7	26.9	0.1	7.2	7.5	1.9	1.7	0.1	6.2
	Ocp	1.2	1.6	2.1	3.0	10.7	1.5	1.5	14.6	13.5	28.0
2200-2300	Pro	3.1	45.1	26.4	0.3	8.4	7.2	2.1	1.1	0.1	6.3
	Ocp	1.1	1.6	1.9	1.2	9.2	1.4	1.2	6.2	9.5	28.5
16 hours	Pro	3.4	36.5	20.0	1.1	4.9	22.0	5.1	1.9	0.1	5.2
	Ocp	1.1	1.4	2.0	4.0	11.1	1.5	1.4	17.1	20.1	36.3

Legend

Pro. Proportion of vehicles in % (Sum may not add up to 100% due to figure rounding)
Ocp. Average occupancy of vehicles
M&H Medium and Heavy